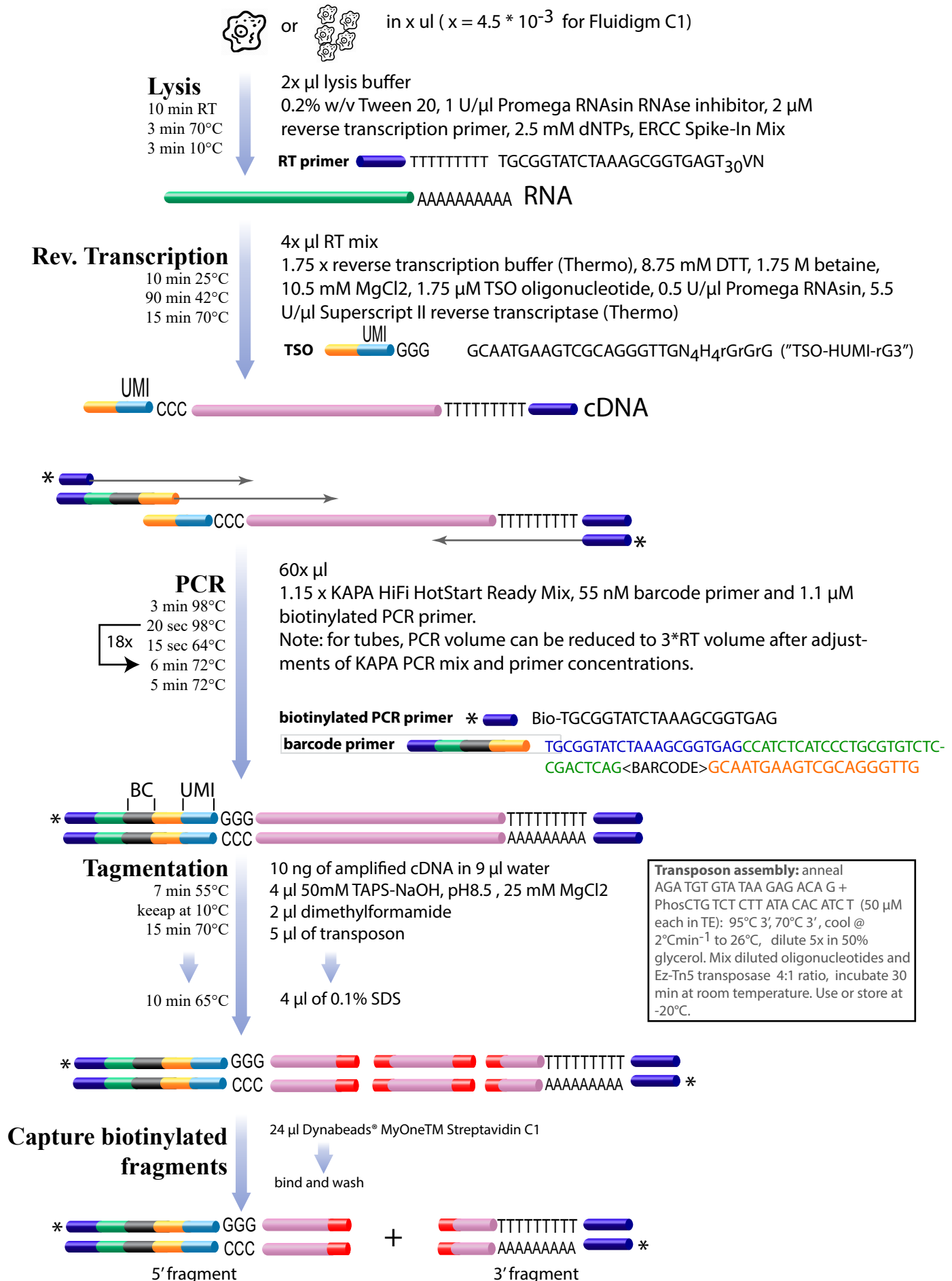
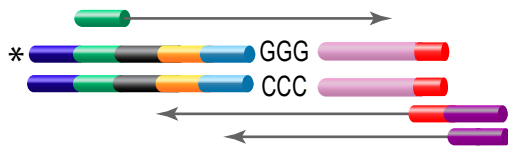


Supplementary Figure 11 p.1



Streptavidin beads with biotinylated terminal fragments




Library PCR


15x


- 30 sec 98°C
- 10 sec 98°C
- 30 sec 55°C
- 30 sec 72°C
- 2 min 72°C

beads +

- 12.5 µl 2x KAPA HiFi HotStart Ready mix
- 1.25 µl 10µM forward library primer
- 1.25 µl 10µM reverse library primer
- 1.25 µl 1µM long reverse library primer
- 8.75 µl H2O

forward library primer  CCATCTCATCCCTGCGTGCTC

reverse library primer  CCACTACGCCTCCGCTTTCCTC

long reverse library primer  CCACTACGCCTCCGCTTTCCTCTCTATGGG-CAGTCGGTGATAGATGTGTATAAGAGACAG



Library sizing and cleanup

- PCR + 75 µl TE
- + 75 µl of SPRIselect® beads
- supernatant (unbound fragments < 350 bp)
- + 15 µl of SPRIselect® beads
- wash beads with 85% EtOH
- elute library with 10 µl H2O

